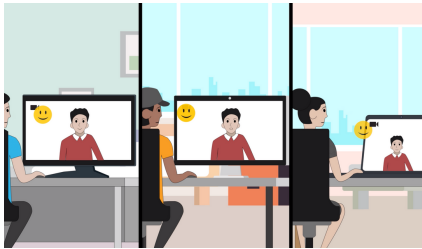


Evaluation and Feedback

Online learning remains an interaction between trainers and learners. Moreover, the evaluation of the courses will give valuable input for improvement areas.

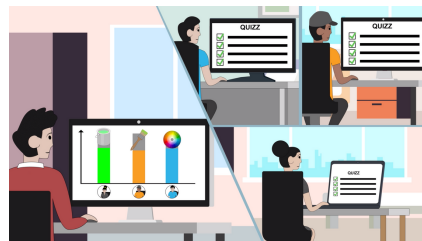


Make sure to communicate you are open to feedback

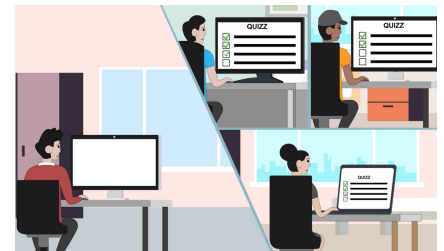
By making comments or engaging in discussions as regularly as possible the educator can ensure that his/her learners are in the right frame of mind during their training.

Be aware of the response shown

Depending on the results of each student, the trainer can either intervene individually to help the learners in difficulty, or adapt his teaching objectives if he notices that the whole class is in difficulty.

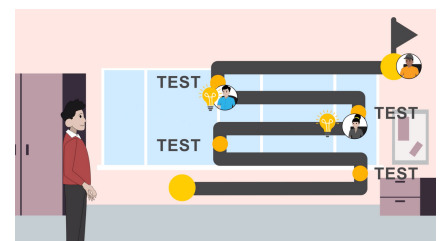


Multiple-choice questionnaires

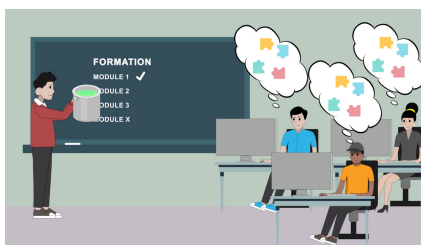


Questionnaires are an opportunity to assess student progress and, therefore, course effectiveness. Use a tool that provides anonymity so students can be frank.

Set up a formative assessment process



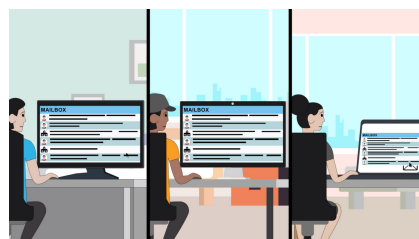
Give constructive feedback to the learners



Correct or incorrect, always explain why. Encourage social and peer feedback, participate in learner's discussions.

Throughout the course, the trainer should set up a formative assessment process, followed by a summative assessment to identify whether learners are succeeding or falling behind.

Allow continuous feedback



Supplying feedback to learners throughout the duration of a course is a great way to keep users engaged and motivated.